

# Alpine Sun

"Best climate in U.S. by Government reports."



VOL. 8, NO. 18 (186) ALPINE, CALIF. FRIDAY, AUG. 28, 1959 10¢

## Public Water Meeting Monday

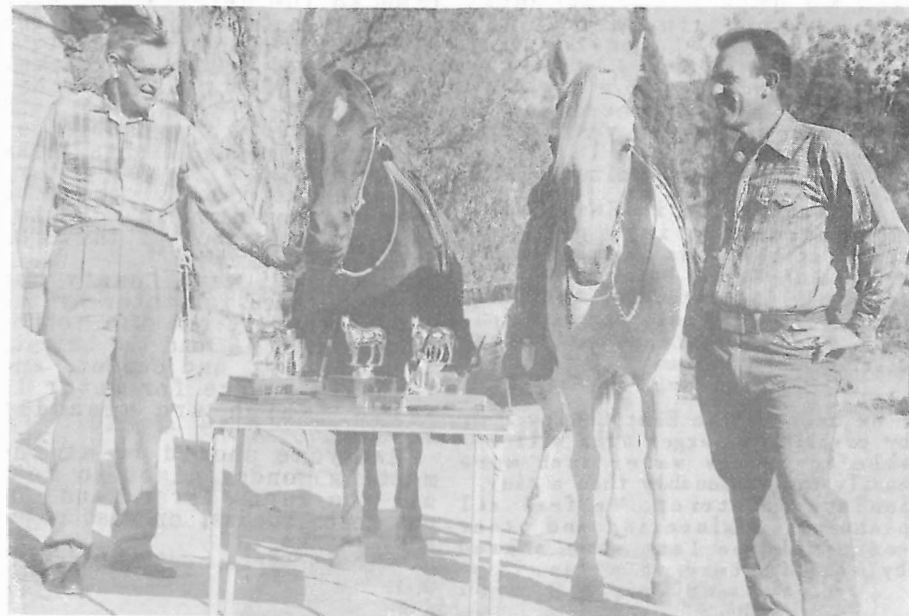
### WATER ALLOTTED FOR ALPINE

The S. D. Water Authority has already made up a proportional share for East County MWD in water from the second barrel, approximately 1850 acre feet per year, or 600 million gallons. This shows that Alpine is assured of water.

### EXPERTS TO ANSWER BOTH

### SIDES ON URGENT PROBLEM

Voters and property-owners of Alpine are invited to an open meeting of the water committee of the East County MWD so that the matter of getting water can be aired, queried and answered by a disinterested



FREE HORSESHOW PRESENTED BY THE E. C. VALLEY LIONS CLUB FOR THEIR BLIND BENEFIT FUND. SUNDAY, AUGUST 30TH IN CONJUNCTION WITH THE FIESTA DEL PACIFICO. AT FLYING HILLS RANCH, 1200 RIPPEY, FLETCHER HILLS. FRED JORDAN, VICE-PRESIDENT, RIGHT, AND MAC CLARK, GENERAL SHOW CHAIRMAN ARE SHOWN WITH SOME OF THE BEAUTIFUL TROPHIES TO BE AWARDED AT THIS ANNUAL EVENT. IN ADDITION SOME LUCKY CONTESTANT WILL BE AWARDED A SET OF CHAPS. SHOW STARTS AT 9:30 A.M.

water authority. It is to be at 7:30 p.m. in the Alpine School Auditorium, Monday, Aug. 31.

This extra issue was published to bring all up to date with facts and data on the situation, complete chronology, and excerpts from letters to the Editor which mirror the feeling of many taxpayers.

At presstime it was learned that one of the principal speakers will be Fred Simpson of the California Water Authority.

## EDITORIAL. Alpine Still Suffers from Growing Pains!

The hot topic of water for Alpine, where for 10 years progressive men have been trying to bring it in where it is so desperately needed, seems to be coming to a head.

For two years they have worked on a district that is nearing election, with promise of water within two years.-- Then a group in Alpine Heights, using an arbitrary and unfair law, created a municipal water dis-

### The People Say:

We think it is unfortunate that this community should be so split over the water question, the most important matter facing the area.

We want to be in a water district that will get water, and we urge every property owner living in East County MWD to study the matter very carefully.

The boundaries for the E. C. MWD have been approved and we will have water two years after the election.

-Mr. and Mrs. Walter Gibb

We want to be in East County MWD because it is a proposed district that has been approved by the S.D. County Water Authority. It is our understanding that this authority is the only organization that can allocate water to any district being formed.

-Mr. and Mrs. Paul Thorpe

We believe the East County MWD, by covering a larger area will be able to supply water much more easily and reasonably than a tiny, isolated district. We feel all planning, engineering and other costs will be less when shared by many instead of a few.

-Mr. and Mrs. H.R. Knox

trict to stay out of the East County MWD. This law allowed them to embrace property of many that did not want in. In fact they did not give any advance notice of their action, even excluded this newspaper, which, like the engineers and the water committee, only learned of it after it was formed, and released to a S. D. paper.

The Sun has faithfully reported facts, statements made at public meetings, and released from the engineers. To date the heights people have never notified the Sun of any meeting so that it might be reported.

This is covered in stories and letters in this issue. One person that asked for annexation to the heights district told me on the phone 'you are misinformed as to the facts'. One man, when the Sun asked him where did he think they were going to get water said 'I don't know, they solicited me to join'. The heights folks believe they will get water, but the East County committee says 'If you have any doubts, call Mr. Holmgren of the S.D. Water Authority'.

In short, East County has been approved for water by the S.D. Authority and the Metropolitan in L.A., and the heights area has not, and cannot, and its only source for water is wells, which are steadily receding.

Everyone should be at the meeting Monday night to hear all the facts first hand. Do not go by rumors, or what somebody thinks.

Get the facts, get the truth.  
C. I.

## FLORENCE'S MARKET

Owned & Operated by Florence Clarke

Groceries - Meat - Fresh Vegetables - Liquor

2262 Highway 80

Hickory 5-2436

Alpine

## INTRODUCING

### The Latest Modern Method

IN

### Hard Rock Water Well Drilling

EFFICIENCY

SPEED

ECONOMY

FIRST RIG ON THE COAST

### B & R Diamond Drilling Co.

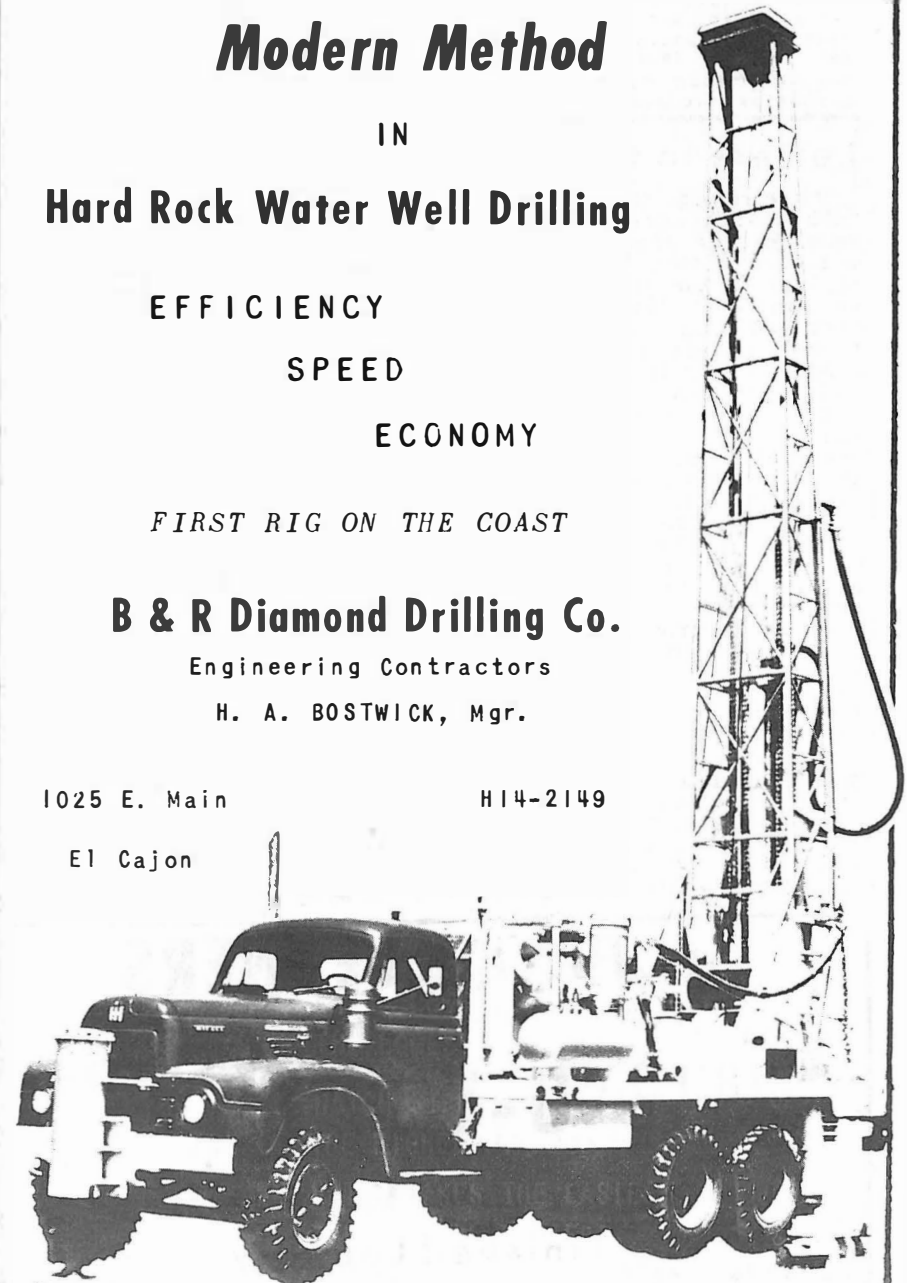
Engineering Contractors

H. A. BOSTWICK, Mgr.

1025 E. Main

HI4-2149

El Cajon



## THE ALPINE SUN

*America's tiniest newspaper!*

HICKORY 5.2415 OR 2394.

PUBLISHED SEMI-MONTHLY ON FRIDAY.  
10¢ A COPY; BY MAIL, \$2. YEARLY.  
2255 TAVERN RD. MAIL: RT. L. BOX 189  
ALPINE, SAN DIEGO COUNTY, CALIF.  
CLARKE IRVINE, EDITOR & PUBLISHER  
ALICE IRVINE, ART & COMPOSITION  
PRINTED BY PHOTO-OFFSET ON OUR RANCH  
EST. JANUARY, 1952 BY CLARKE IRVINE  
*Second-class mail privileges  
authorized at Alpine, Calif.*

### Letters to the Editor

Preceding the election I talked with several people who were for the Alpine Heights MWD and also with a number against it. All of the proponents seemed to want the district because they had been told it was being formed in order not to be included in the future East County MWD. For various personal reasons these people did not want water to come to this area yet. I also know of persons who voted for the Alpine Heights MWD because they were under the impression that it would bring water into the area. However, in my opinion, most of the voters for the little district were for it in order to withhold water from Alpine Heights or at least to delay it as long as possible. I will not argue the reasons these people give for this odd desire. What I do strongly object to is, wanting water on my property, I find myself included in what appears will turn out to be a dry district. I do not want to force water upon people who don't want it, but I will not sit idly by when they have kept

me out of a larger water district which appears much more likely to be able to bring water in.

With the filing of a lawsuit recently by one of the property owners residing in the Alpine Heights MWD, the people who were talking the dry district up now find themselves in the awkward position of having to declare that they really were for water all the time. This is fine as far as I am concerned, if they really intend to bring water in. However, I believe the expense will be prohibitive for a district of less than 500 acres. The East County MWD now forming comprises an area of nearly 30,000 acres, has already had the preliminary engineering studies done, has had its water allotment approved, and consequently will be able to bring water in a lot sooner and at a far lower rate than a tiny district. It is doubtful that the Alpine Heights WD will be able to obtain water if that is now their desire.

I wonder how the other taxpayers of the Alpine Heights MWD feel now that we are incurring debts in the form of attorney's fees, etc., growing out of the defense against the suit recently filed. Nor is this one suit likely to be all. Various property owners wishing to be out of the district will probably follow with suits of their own. The Alpine Heights MWD board of directors has the power to incur indebtedness short of a bond issue. Their attorney stated at a recent board meeting that there are numerous safeguards against free spending by the board,

More on page 13

## ALPINE CLEANERS

AND

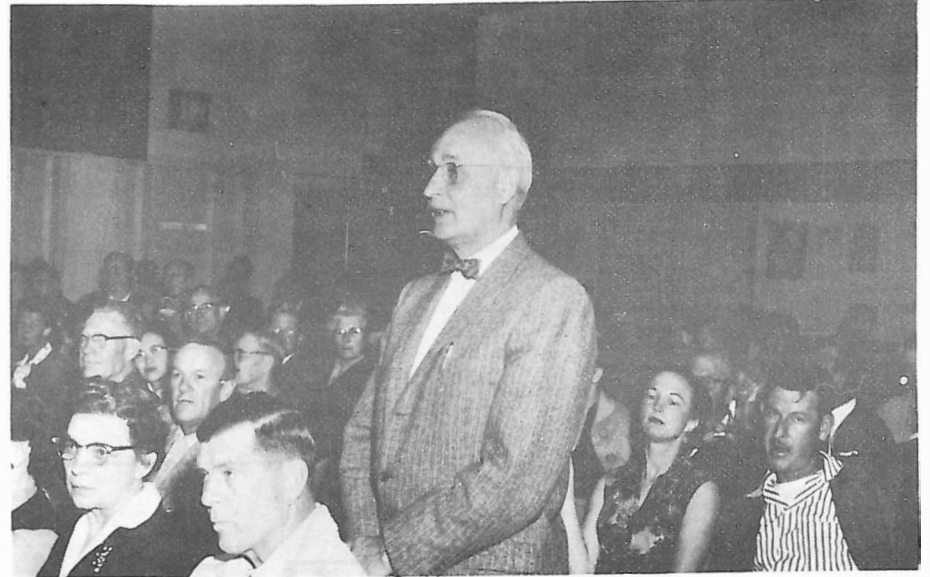
## U-WASH

*A Complete Service*

Finished Laundry

2223 Hwy 80

HI5-224



RICHARD S. HOLMGREN, GENERAL MANAGER AND CHIEF ENGINEER, S.D. WATER AUTHORITY, ADEQUATELY ANSWERED MANY QUERIES. HE SEES BRIGHT FUTURE FOR BACK COUNTRY WHEN WATER COMES, BUT HEIGHTS AREA WILL NOT BE ELIGIBLE UNLESS IT ANNEXES TO EAST COUNTY MWD. PHOTO MADE AT LAST MEETING HERE.

Mrs. Elsie Hoffman has been entertaining her sister Mrs. Casper Klee and her husband and four children at her Victoria Drive home. They are from Rolling Hills, near Palos Verdes, enjoyed a week here, like Alpine.

## Valley STATIONERS

NEW OWNERS

All Kinds of Office Supplies  
& Equipment

SCHOOL SUPPLIES

Dan C & Margaret Wadsworth

120 W. Main El Cajon HI4-1328

## SPUR VALLEY RANCH NEW POOL OPEN

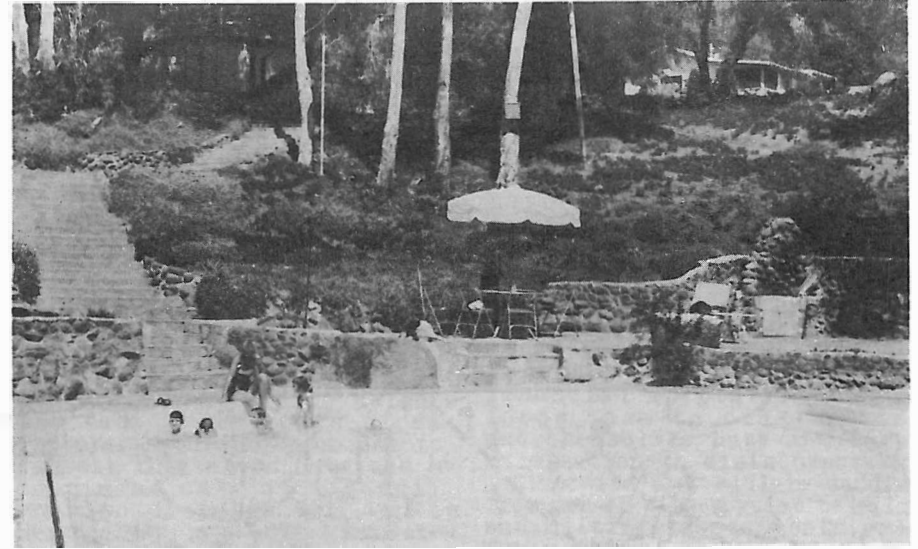
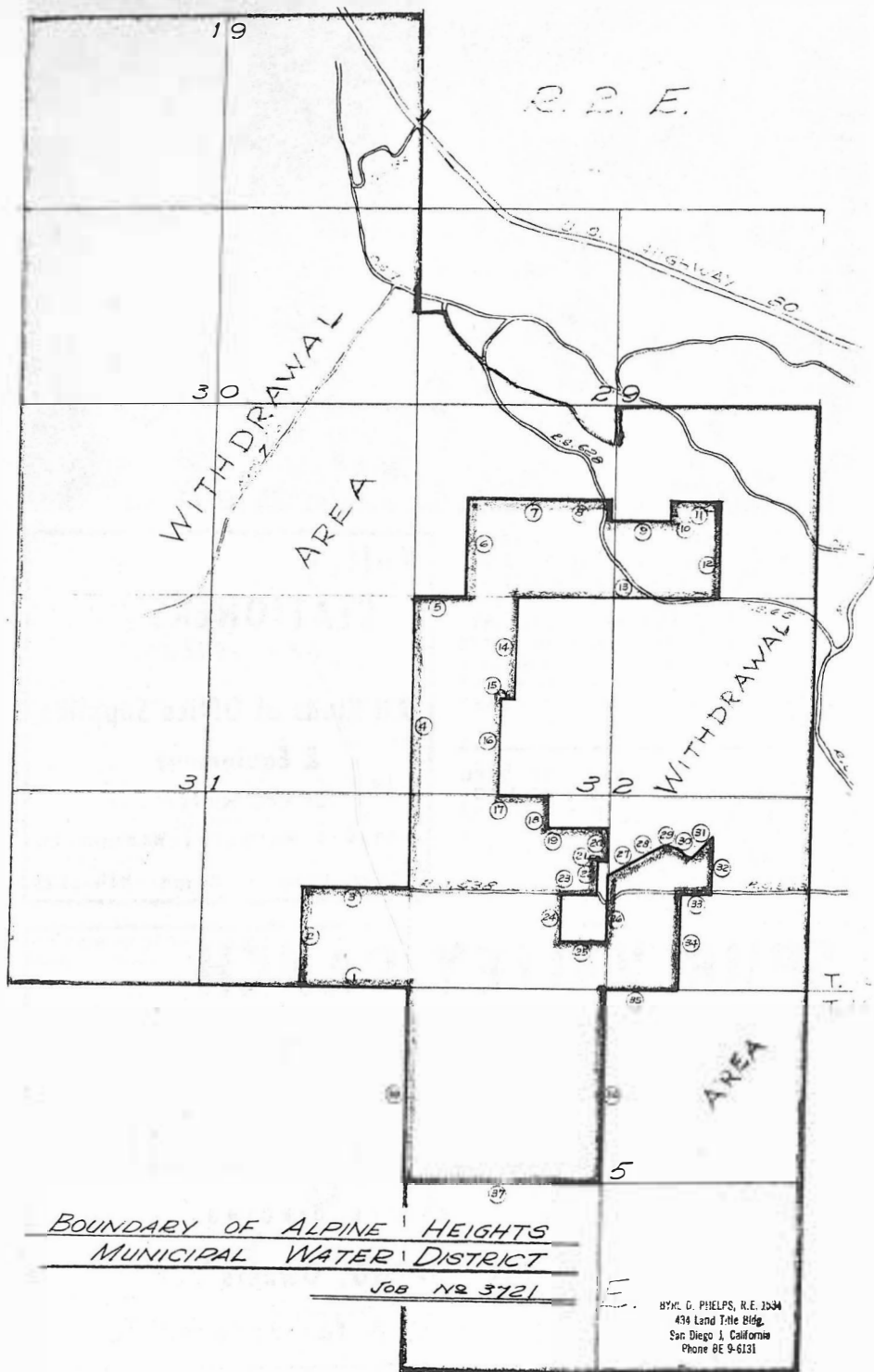
Harbison Canyon Road, Dehesa

CAFE - SOFT DRINKS - ICE CREAM

ARCHERY • SQUARE DANCING

VARDY & EVEY GREGG, Owners

Open Daily. Call HI5-9595 for Information



WATER IS THE QUESTION IN ALPINE TODAY, BUT AT TEMPLE ROCK RANCH, THERE IS PLENTY IN THE POOL WHERE GUESTS WILL ENJOY A LUAU, SWIMMING, DANCES AND SO ON WHEN MR. AND MRS. DAVID L. SCHURGER PRESENT AN EVENING OF FUN, TO BENEFIT ST. PHILOMENA CHURCH. CALL HI5-2723 OR 2347 FOR DETAILS.

"Doctor," she said, "what is wrong with me?"

"Madam, you are too fat; you use too much rouge and lipstick; you smoke too many cigarettes. But you are in the wrong office. The doctor is next door. I am only a newspaper man."

## Famous Log Cabin Cafe

Featuring

### SEA FOOD

AND

### Broasted Chicken

Frog Legs - Mt. Trout  
Salmon Steak - Swordfish  
Scallops, Etc.

ALSO COMPLETE MENU

"Tell Us You Saw it in the Sun!"  
2205 Hwy 80 Alpine HI5-2317

# MALICOAT NURSING HOME

STATE LICENSED

## Newly Remodeled & Furnished

CONSCIENTIOUS SERVICE

CONGENIAL ATMOSPHERE

BALANCED MEALS

24-HOUR NURSING SERVICE

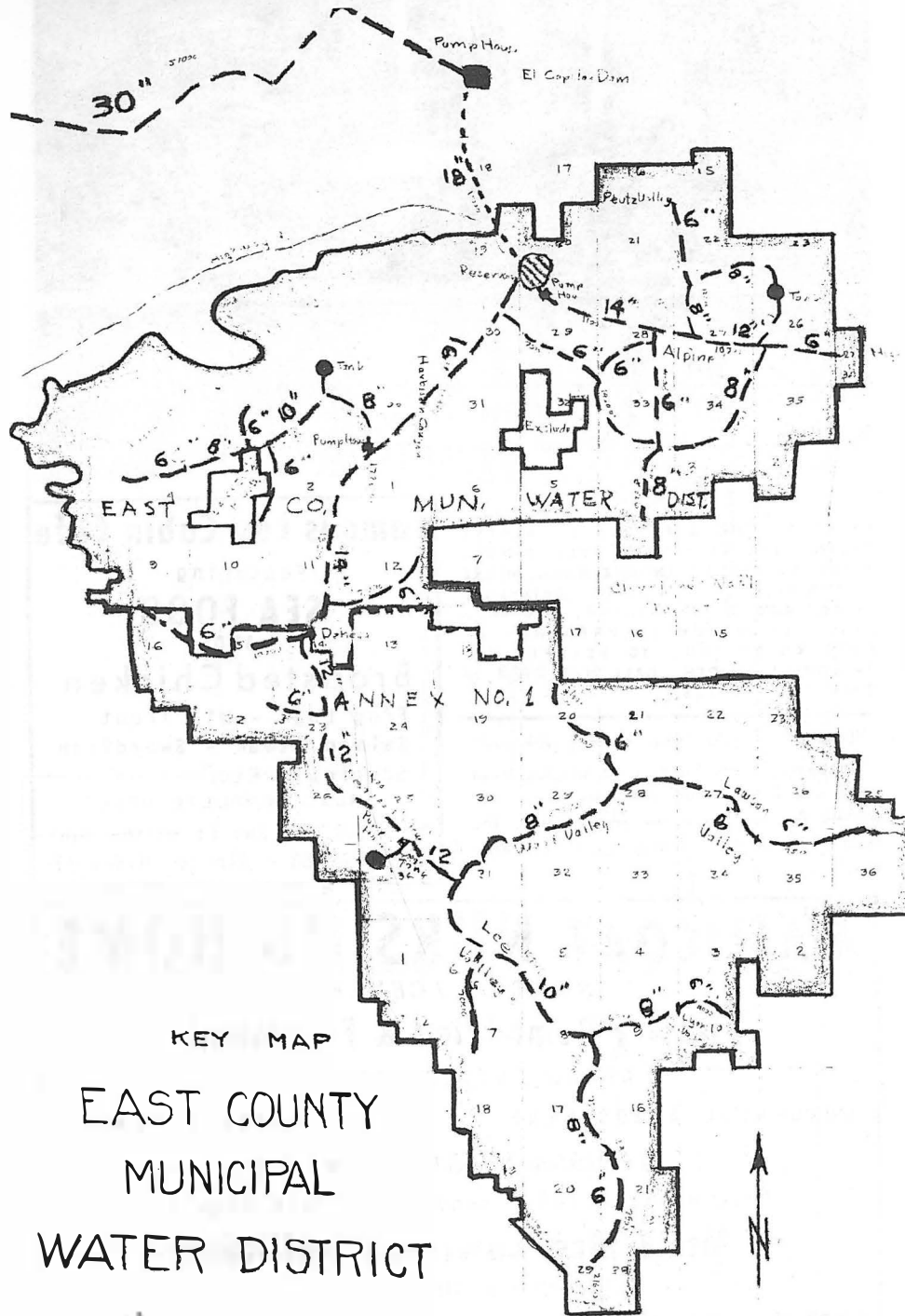
Reasonable Rates Depending on Care Required

## Mr. & Mrs. Lawrence Mallicoat

OWNERS & OPERATORS

2733 Hwy 80 Alpine

HI5-2771



KEY MAP  
EAST COUNTY  
MUNICIPAL  
WATER DISTRICT

We must get it over to members of the Alpine Heights MWD that their board of directors, had they chosen to do so, could have sat themselves down and by a unanimous call of the roll, voted our exclusion final without retaining a lawyer. Mr. Cranston has mentioned this fact several times, and Mr. Gregory told the directors so at the Heights District meeting of August 12, 1959, when he was retained.

We must get it over to the members of the Alpine Heights MWD that their board of directors, should they choose to, can sit themselves down and by unanimous call of the roll, vote to dissolve the Alpine Heights MWD, and save themselves the cost of supporting a non-producing Water District.

We must advise them that by their own act they voted upon themselves the maintenance of a water district that was formed to remain dry; and that their board as it existed at the organizational meeting July 22, 1959, has let them in for the maintenance of a water district that was formed to stay dry but has been organized to investigate the possibility of obtaining water. If they now demand taxes, assessments and a depository from which warrants may be issued - the county will find them a treasury in the usual manner of all water districts. They will find themselves with a county-imposed water tax and assessments on their tax bills to cover every warrant their board of directors chooses to have issued.

They will have assessments to cover every loan they make and every note they issue.

They will have assessments to cover every legal battle they choose to fight to save face, or otherwise; and if they pursue the self-directed investigation of a feasible plan to bring water in to them, they will have assessments to cover engineering studies and all the other numerous items that have to do with such a project plus rights-of-way to lay the pipes through. These costs will

run into many thousands of dollars for the few (32) property owners that comprise the Alpine Heights MWD. We must remind them that out of the 46 voters who formed the district there are only 32 tax bill-payers.

It may be the voters who make and control the issue, but it is the property owner who pays the bills.

The Alpine Heights MWD members ought to file suit against their own district to restrain them from any further activity, financial or otherwise, and force them to dissolve or get themselves busy and force an election to disincorporate.

Otherwise they will be saddled from now on with regular taxation and multiple assessments, all for nothing.

NOTE: Your attorney gets \$70. for each meeting he attends plus several dollars an hour for each and every hour he spends on your district's needs.

- A PROPERTY OWNER

G.B. Gerlt, his mother, Mrs. Ruby Gerlt, and his grandmother, Mrs. Mary Farlow of Rock Terrace, with Marty Nevitt, are back from a vacation drive to K. C., Mo.

**BACK TO SCHOOL**  
AT  
**GUTHRIE'S**  
Complete Children's  
Department Store

All Your Children's Clothing  
Needs in Boys, Girls & Sub-  
Teens. OPEN MON & FRI TILL 9  
LAY-AWAY & CHG ACCTS INVITED  
S & H Green Stamps

*Guthrie's*  
children's shop  
HI4-4788  
135 W. Main St., El Cajon  
ALSO IN OCEAN BEACH; SOON IN  
COLLEGE GROVE

# **NOTICE**

**To Property Owners**

***Alpine Heights Municipal Water District***

***Everyone Interested in the Betterment of Alpine***

## **PUBLIC MEETING**

***7.30 p.m. MONDAY, AUGUST 31, 1959***

***ALPINE SCHOOL AUDITORIUM***

A disinterested water authority  
will speak and answer questions  
on the value of water to Alpine land  
and what it has done for  
other San Diego areas.

## SMALL TALK

By Cynthia Irvine  
Age 11, 6th Grade

I sure was happy when Mrs. Lee called Daddy and told him they had found their little Dashshund Connie. She called when the paper was on the press and it was too late to take the news out of my column. Anyway we are all glad for them.

Mark and Sandy Walker are home from their trip. They couldn't find a place to stay and had to go to the San Juanquine Valley. It was so hot they decided to come on back home.

Diann and Kathy Deeber are visiting their friends in Alpine this week. They live in San Francisco and got to come down for a few days.

Friday night Maxine Kinikin got to stay overnight with me. She told me her grandpa had a heart attack. Her mother and dad had to go to Idlewild to get him. Now he is living with them.

Elaine Earickson got a new goat. She named it Gidget. Now she has Midget and Gidget!

The 6 Schnur kids moved to Descanso last week. Their Daddy used to run the Alpine Casino.

Cathy Casey is on a two week's vacation with her aunt. I don't know where she got to go till she comes back.

The Manning kids' new little girl cousin is named Martha Jo. They haven't seen her yet and can hardly wait.

I was over helping Danny Place feed his nine turtles and he showed me two that he hatched last year. They are about as big as saucers.

### Now CARROT JUICE

FRESH . COLD . DELICIOUS

By Glass or 1/2 Gal. to Go

Mart & Jackie's TAP BEER.

### ALPINE CAFE

Breakfast, Lunch & Dinner  
Sandwiches

7 A.M. TILL MIDNIGHT DAILY

2225 Hwy 80

HI 5-9596

Randa Adams got a new car last week. She told Cecile that her dad killed another big

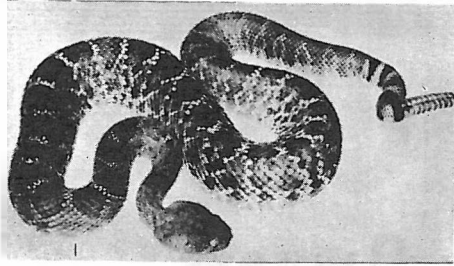


PHOTO COURTESY S.D. ZOO

I'D HATE TO MEET HIM IN THE DARK!

rattlesnake down by their well. This sure has been a good year for snakes. We sure have seen a lot of them up in the back hills but only kill the rattlers. The king and gopher snakes are good to have around.

GINNEY Cadwallader has been spending a few days with Florence Clarke. Her daddy is the Weber bread man. She sure has been having a good time and Florence even took her up to Hobart House for lunch.

BOY has Judy Wilcox's daddy been working. The other day when we went by we saw the whole front of the house being remodeled. They painted it yellow and it looks swell. Judy's cousin Marilu got married the other day, too.

LYNN Kinikin had a surprise birthday party last Saturday. She was 7 and had a lot of fun.

Betty McLeod left her horse Arab with Elaine Earickson to look after for a whole year. Maybe Betty gets to come back and live here after that.

LYNN Coleman left Monday for Texas with her mother. They used to live in Myrtle Creek, Ore. Lynn has been spending the summer with her two little nieces, Dink and Ginney Frey.

Little Robbie Crosby moved away from Alpine. He used to live at Smith's Cottages.

JEANETTE C. HINKLE  
Real Estate & Insurance  
CASUALTY & FIRE

2101 HIGHWAY 80 ALPINE HI 5-2502

Letters to Editor from page 4

although there is no actual limit on the amount they could spend. Now, in view of the suit, it appears the board will have plenty of spending to do, and all for nothing. Personally, I would much rather see my hard-earned cash being used for bringing water in, than see it go down the drain in court actions, etc.

One of the board made a public statement that he would let anyone out of the Alpine Heights MWD if they so desired. Their attorney stated at the last board meeting that although the other members of the board were not legally bound by what one member said, this one member would have his conscience to consider if he decided not to permit people to withdraw. Also at the same meeting some new properties were allowed to annex - or at least passed the board - and it will now depend upon an election held within those properties whether or not they will join the district. If the board saw fit to let new people in, let's hope it will be consistent and let those out who so desire. With a little give and take on both sides, people who want to join East County MWD could be excluded from the Alpine Heights MWD and the remaining people who want to remain in the

## 15 Ask for Heights Water

The Alpine Heights MWD held a meeting Wednesday last week with 30 present. Fifteen names were submitted to the board asking annexation. Their land totals 400 acres, Mrs. Al Adams, secretary, told the Sun.

They are: Geo. Campbell, Scott Graves, Tom Hill Sr. and jr., Robt. Standen, John Sury, Bernice Sneath, Harvey Beard, Byrom Viets, Jos. Rabouin, Edwin Hake, Ed Weber, Agnes Neely, Jean Dupaul, Geo. Smith. Some are in the proposed East County MWD.

Floyd Lowe, board member, was elected vice-president. John Gregory, attorney for the district, stated that Mrs. Edith M. Bishop had filed a complaint against the district. (This was told in the last issue of the Sun, but no name had been revealed). Hearing on this is slated for Thursday Aug. 27, at 9:30 a.m. in Superior Court No. 2, in S.D. Next meeting is Wed. Sept. 2nd at Adams home.

You can always tell an egotist, but unfortunately you can't tell him much.

Heights MWD could continue to do so, whatever their reasons.

-GEORGE E. MARTIN

Roof Repairs?    New Plumbing?

Remodeling?    Electric Work?    Paint Problems?

LET US HELP YOU

Water Pumps    Car Ports?

New Patio?    We service all types of Water Pumps

NEW HOMES Special Discounts

AL HINKLE Lumber & Ranch Supplies

2101 HWY 80    HICKORY 5-2184 OR 2502    ALPINE

## COSTS OF WATER (Per 1000 Gals.)

Metropolitan Water District	.046
San Diego County Water Authority	.006
Pumping Charge	.092
Storage and Chlorination	.006
Metering and Collection Charges	.100
Overhead and Capital Improvements	.050
Total	.300

\$2.20 per 1000 cu. ft.

It is recommended that a rate of \$3. be used per 1000 cu. ft.

## SAMPLE DISTRICT COSTS (Per 1000 cu. ft.)

Riverview Farms	\$3.70
Helix Irrigation District	3.10
Poway M.W. District	2.50
Lakeside Irrigation District	2.50
San Dieguito	2.47
City of San Diego	3.20

### Estimated Annexation Fees

Proposed East County Municipal Water District	
Municipal Water District Annex Charge (30 year period)	.17
San Diego Co. Water Authority Annex Charge (5 year period)	.16
Municipal Water District Regular Tax	.18
San Diego Co. Water Authority Regular Tax	.21
Total	.72

### SCORE ON WATER EXCLUSION PHELPS BUYS ACREAGE

This total pictures the attitude of those within the Alpine Heights MWD. Exclusionists: 83 signers of petition to get out, plus 265 families using Harbison Canyon Water Co. service. Those desiring to remain in, 46 voters.

Guy C. Phelps, builder, 2526 Hwy 80, has just bought a 40-acre property off South Grade Road, from Allan B. Carlson and wife for \$44,000 as indicated by revenue stamps.

Prejudice is a great timesaver. It lets us form opinions without bothering to get the facts.

ALPINE NEEDS A PHOTOGRAPHER

## Thinking of Selling or Trading?

### "Experience Counts"

#### Serving S. D. County for 21 Years!

BE ONE OF OUR MANY SATISFIED FRIENDS

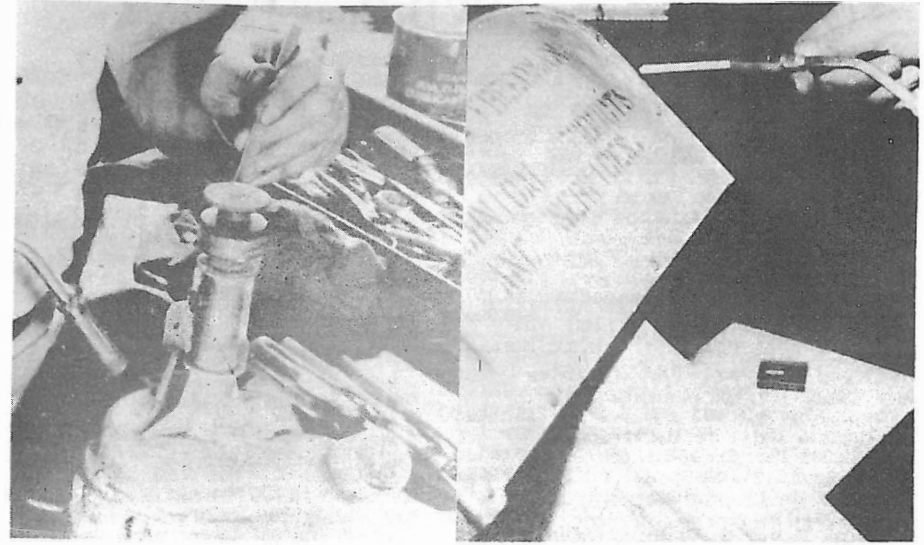
Call Bill Bartos, Dick Garner or Hugh L. McCoy

## Hugh L. McCoy Co. Real Estate Office

15949 Hwy 80

Alpine

HI5-2655



### LA MESAN INVENTS ALUMINUM SOLDER

Samuel Freedman, frequenter of Alpine which he and his wife like very much, and who is a retired Lt. Cdr. USN, recently brought out something that heretofore had been sorely needed in about every walk of life-- a fluxless aluminum solder. It is a product of his Chemalloy Electronics Corp., of Gillespie Field, Santee. Now sold all over the world, shipped out of his factory every day.

The Sun office and shop have made good use of this unique new solder which requires no

metal cleaning or scratching. It works equally well on copper, zinc, and plated ware, even potmetals. For the householder it has been found unusually handy for joining broken aluminum things and for filling and repairing, as pans, washer housings, downspouts, roofs and so on.

Al Hinkle Lumber & Panch Supplies handles it here, and Hinkle says it has proved a boon to the handyman and do-it-yourself fan. Freedman is president of the Armed Forces Communications & Electronics Assn. of Washington,

### Chemalloy Fluxless Aluminum Solder

DO IT YOURSELF

MAKES IT EASY FOR ANYONE TO WELD

Solder Aluminum, Copper, Brass, Galvanized, aluminized, copperized, leaded, tinned surfaces. Easy. Quick.

49¢ Available in

ALPINE, Al Hinkle's  
Boulevard, Mt. Empire Bldg. Supply  
El Cajon, W.D. Hall, Hayseed, Valley  
Paint & Sup. Money Sav. Ctr.

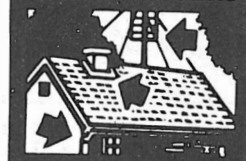
Chains, Craftsman 8097, Powerkraft 6107  
Western Auto 4H4390

**CHEMALLOY ELECTRONICS CORP.**

GILLESPIE AIRPORT • SANTEE, CALIFORNIA

Phone Hickory 4-7661

HOME REPAIRS



IN THE KITCHEN





# East County MWD Cost Estimate

Slaughter House Metering House	\$ 12,000.00	Reservoir, Mountain Top; 1,000,000 gal. capacity	50,000.00
Slaughter House Canyon to Pump House; 51,000 lin. ft. 30-in. pipe at \$18, El. 740 ft.-less friction-El. 680	918,000.00	Reservoir to junction; 5,280 lin. ft. 10-in. pipe at \$8.00	42,240.00
Pump House—El. 680 to 1525 Pressure line, El. 680 to 1525 4,000 lin. ft. 18-in. at \$16	80,000.00	Junction on Mountain Top 5,280 lin. ft. 8-in. pipe at \$6.00	31,680.00
Pressure line to Reservoir 11,000 lin. ft. 20-in. pipe at \$12.00	132,000.00	Pipe on Mountain Top; 10,000 lin. ft. at \$5.00	50,000.00
Reservoir 40,000 gal. capacity	80,000.00	Pump House to Dehesa; 13,200 lin. ft. 14-in. pipe at \$12	158,400.00
Headwork	10,000.00	Dehesa to Lee Valley Junction; 21,120 lin. ft. 12-in. pipe at \$10.00	211,200.00
Pump House to Alpine, #425 to 2275	32,000.00	East-West Branch Line 20,000 lin. ft. 6-in. pipe at \$5.00	100,000.00
Pump House to Victoria Drive 11,000 lin. ft. 14-in. dia. pipe at \$12.00	132,000.00	Beaver Hollow to Reservoir 2,000 lin. ft. 8-in. pipe at \$6.00	12,000.00
Victoria Drive to Reservoir 10,000 lin. ft. 12-in. dia. pipe at \$10.00	100,000.00	Pump House	25,000.00
Reservoir 1.5 million gal. capacity	65,000.00	Reservoir, 1,000,000 gal. cap. Lee Valley line to Junction S. 15,840 lin. ft. 10-in. pipe at \$8.00	126,720.00
Peutz Valley to Victoria Drive 5,000 lin. ft. 6-in. pipe at \$5.00	25,000.00	7,000 lin. ft. 6-in. pipe at \$5.00	35,000.00
E. South Grade Road, Highway 80 South; 13,600 lin. ft. 8-in. pipe at \$6.00	108,800.00	Junction South 7,500 lin. ft. 8-in. pipe at \$6.00	51,000.00
W. South Grade Road, Highway 80 South; 14,600 lin. ft. 6-in. pipe at \$5.00	73,000.00	7,500 lin. ft. 6-in. pipe at \$5.00	37,500.00
East Highway 80; 5,000 lin. ft. 6-in. pipe at \$5.00	25,000.00	Junction East to Lyons Valley; 6,500 lin. ft. of 8-in. watermain at \$6.00	39,000.00
Harbison Canyon to South Grade Road; 7,500 lin. ft. 6-in. pipe at \$5.00	37,500.00	4,000 lin. ft. 6-in. watermain at \$5.00	20,000.00
Tavern Road, Highway 80 South; 8,000 lin. ft. 6-in. pipe at \$5.00	40,000.00	Woods Valley to Lawson Valley; 23,760 lin. ft. 8-in. pipe at \$6.00	190,080.00
Tavern Road, Highway 80 South; 5,280 lin. ft. 8-in. pipe at \$6.00	31,680.00	Lawson Valley; 7,500 lin. ft. 6-in. pipe at \$5.00	37,500.00
Harbison Canyon Road, Highway 80 to pump house; 18,480 lin. ft. ft. 16-in. pipe at \$14.00	258,720.00	Sloan Ranch line; 8,000 lin. ft. at \$5.00	40,000.00
Pump House, Harbison Canyon	25,000.00	Misc. Valves and Pressure Regulators	25,000.00
Pressure line to Mountain Top; 4,000 lin. ft. 8-in. pipe at \$6.00	24,000.00	Fire Hydrants	12,000.00
		Right of Way, Legal Contingencies	381,980.00
			<b>\$4,000,000.00</b>

## RECREATION CENTER CLOSES

G.B. Gerlt of Rock Terrace has closed his Alpine Recreation, which he opened at 2538 Hwy 80 last June 19. 'Just not sufficient interest' he says, has resumed work in S.D.

Ramona Bonnin, 14, daughter of Mr. and Mrs. Crake Saunders, is back from Children's Hospital where she had corrective surgery on her right ear which kept her there for three days.

Mrs. Maud Eratt of Huey Lane, is in Brazil, Ind., visiting her brother and his wife. She returns around Christmas via Skaggs Island where she will enjoy the holiday with her daughter, Mrs. Harriett Jenkins and family.

Paul Nichols, Pennsylvania son of Paul J. Nichols, Willows Road, is visiting his father here for a week having flown in Saturday. They have not been together in seven years.

# Complete Record of Events

## East County Municipal Water District

November, 1957.  
District made first request to the San Diego County Water Authority.  
April, 1958.

Request was reviewed by the Water Problems Committee and all existing water districts within the area. The Authority stated that they looked with favor on annexation of these three districts. However, Helix Irrigation District requested a six-months period to make a feasibility study of the water requirements in the area.  
The Water Problems Committee met with the Helix Board and their consulting engineer, John Longwell, for several meetings.  
September, 1958.

Helix Board made a decision, deeming it inadvisable to annex all three areas at that time. The three districts were Rancho El Cajon, Alpine and Dehesa.

Later in September, 1958 Committees of these three districts met, and decided on submitting a request to the Authority under East County District. This was a joint action of all three committees at that time and a postcard survey was made, to be returned by October 10, 1958.  
November, 1958.

Results of the survey and the new boundary map was forwarded to the Water Authority, and was informally approved on December 18, 1958, with certain recommendations as to the boundary.

February 19, 1959  
Property owners of Blossom Valley requested annexation to Rio San Diego, at which time the Boundary Commission tentatively accepted this proposal and engineers for the two areas determined a common boundary line.

March 2, 1959  
East County boundaries received informal approval for annexation to the Water Authority.

July 17, 1959  
Metropolitan Water District, by letter dated July 17, 1959, approved the legal description of the East County MWD.

July 27, 1959  
A boundary map showing the area under exclusion petition

to be excluded from the Alpine Heights MWD, also showing what was to be left of the Alpine Heights MWD; together with a complete legal description of both portions of this boundary map; was submitted to the Boundary Commission for their consideration.

July 28, 1959  
The San Diego County Boundary Commission approved our Boundary map and our petition with its' attached legal description; and forwarded same to our attorney, Cohn Cranston.

August 6, 1959  
Mr. Cranston wrote a letter to the general manager, Richard S. Holmgren, explaining our situation in regards to the exclusion of our lands from the Alpine Heights MWD. Setting forth the action being taken on the matter, Mr. Cranston requested that this communication be read at the August meeting of the Water Authority.

August 6, 1959  
Our petition to exclude, with its' letter of transmittal was forwarded to the Alpine Heights Municipal Water District's secretary, Mrs. E. Chireen Adams. A copy was sent, on that date, to Eugene J. Freeland, general manager of the Alpine Heights MWD. W. Lowthian signed the Postoffice return receipt for the original petition on August 11, 1959.

August 12, 1959  
A letter of transmittal accompanied by a copy of our petition to exclude from the Alpine Heights MWD was written to Richard Holmgren, general manager, the S.D. County Water Authority. A copy of the Alpine Echo, stating that non-contiguous annexations were being sought by the Alpine Heights MWD was also enclosed. Assistance was asked of Mr. Holmgren; as a result, he asked for a complete set of papers on East County for a review study.

August 14, 1959  
At a meeting of the S.D. Water Problems Committee, the Water Authority reviewed, reaccepted and certified the East County MWD as a proposed agency; thereby excluding the Alpine Heights MWD.

**NO MORE BURNING**

Permits for fires have been cancelled by Alpine Fire Dept., and none will be issued till after rain starts due to the extreme dryness. Violators will be cited and fined. Residents are urged to be extra careful with everything that might cause a grass or brush fire.

**J. H. McKie, Jr.**

**REALTOR**

2355 HIGHWAY 80

P.O. Box 398 ALPINE, CALIF.

ELSIE HOFFMAN, ASSOCIATE

HICKORY 5-2217

**SAVE ON GASOLINE**

**ROCKET**

**Self-Serve**

COMPLETE AUTOMOTIVE REPAIRS

ARC & GAS WELDING

**Alpine**

**MOTOR SERVICE**

HI5-2317

2038 Highway 80, Alpine

**MISS WILCOX IS MARRIED**

The marriage of Merilu Christine Heath, to Tony Sands of Savannah, Ga., on Monday, Aug. 17 in S.D. was announced here this week by her parents Mr. and Mrs. Eugene A. Wilcox, Tavern Road.

The newlyweds are en route to Savannah to visit his family after which they embark for Europe to assume their duties with the army. Both are in the medical corps, expect to be abroad for the next three years.

**START NEW CHURCH HERE**

The First Baptist Church, affiliated with the American Baptist Convention, has been inaugurated here at 3522 Hwy 80, formerly the Pock Shop. The local group took a year's lease, will conduct regular services in the remodeled and enlarged structure. Sunday School is at 7:45 a.m., Church Service, 7:30 p.m. All are welcome. If transportation is needed call HI5-2485 or 2476.

**ELSIE HOFFMAN BUSY HERE**

Last issue told of Ida Laughlin joining Henry McKie, Jr., realtor. Some thought Mrs. Hoffman was leaving, but she is handling Alpine, while Mrs. Laughlin has E. C. and La Mesa properties.

**Local Taxes for Neighboring Water Districts**

(Per \$100. Assessed Valuation)

TAX	Helix Irr. Dist.		Rio San Diego	
	1959	1960	1957	1960
Original Tax Assessment (C. W. A. -M. W. D. -Annex Fee)	\$1.10	\$0.80	\$0.49	\$0.24
Tax Assessment for Water Improvements	1.60	1.72		2.10
Total Tax Rate	2.70	2.52		2.34

Rio San Diego is a member Agency in San Diego County Water Authority and Lakeside Irrigation District in the distributing agency.

East County proposed original tax assessment is \$0.72 per \$100. assessed valuation.

**PAYMENT SCHEDULE FOR TAXES AND BONDS**

East County MWD must pay back-taxes to the Metropolitan WD and to the S.D. County Water Authority. Cost of the system as designed will be paid for over 30 years. Only interest to be paid the first three years.

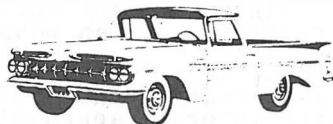
Year	Assessed Valuation per Million Dollars		Bond Retirement	Bond Interest	Total Bond Service
	Assessed Valuation	Tax Rate			
1962	6.4	\$ 2.50	\$	\$ 160,000.00	\$ 160,000.00
1963	6.4	2.50		160,000.00	160,000.00
1964	7.0	2.50		160,000.00	160,000.00
1965	8.0	2.50	40,000.00	160,000.00	200,000.00
1966	8.5	2.50	40,000.00	158,500.00	198,500.00
1967	9.0	2.50	60,000.00	157,000.00	217,000.00
1968	10.0	2.24	70,000.00	154,000.00	224,000.00
1969	11.5	2.10	80,000.00	152,000.00	232,000.00
1970	13.0	1.90	100,000.00	148,000.00	248,000.00
1971	14.5	1.83	120,000.00	145,000.00	265,000.00
1972	16.0	1.75	140,000.00	140,000.00	280,000.00
1973	17.5	1.68	150,000.00	134,000.00	294,000.00
1974	19.0	1.63	180,000.00	128,000.00	308,000.00
1975	21.5	1.49	200,000.00	120,400.00	320,000.00
1976	23.0	1.25	"	112,000.00	312,000.00
1977	25.0	1.13	"	105,000.00	305,000.00
1978	27.0	1.03	"	96,500.00	296,500.00
1979	29.0	.93	"	88,400.00	288,400.00
1980	31.0	.85	"	80,400.00	280,400.00
1981	33.0	.80	"	72,400.00	272,400.00
1982	34.0	.75	"	64,400.00	264,400.00
1983	35.0	.71	"	56,400.00	256,400.00
1984	36.0	.67	"	48,400.00	248,400.00
1985	37.0	.63	"	40,400.00	240,400.00
1986	38.0	.60	"	32,400.00	232,400.00
1987	39.0	.55	"	24,400.00	224,400.00
1988	40.0	.52	"	16,400.00	216,400.00
1989	41.0	.48	"	8,400.00	208,400.00
1990	42.0	.24	"	400.00	10,400.00
1991	43.0	.00	"	00.00	00.00
				10,000.00	00.00
				\$ 4,000,000.00	

**C-L-E-A-R-A-N-C-E**



**ALL '59 CHEVROLET**

**CARS & TRUCKS IN STOCK MUST GO!!**



Open Evenings — Closed Sunday  
Your Authorized Chevrolet Dealer

- ★ HATCH LOWERS EVEN THE LOWEST PRICES!
- ★ HATCH STRETCHES EVEN THE HIGHEST TRADES!
- ★ HATCH MAKES THE EASIEST TERMS STILL EASIER!

850 El Cajon Blvd.

City of El Cajon

HI4-1105

ALPINE'S FINE WEATHER  
• FROM OFFICIAL US STATION HERE

Second-class mail.

HIGH 103, AVERAGE HIGH 92  
LOW 55, AVERAGE LOW 63  
NO RAIN, SEASON 0

ELEVATION 2000 FEET  
WHERE THE SUNSHINE SPENDS THE YEAR



EL CAJON

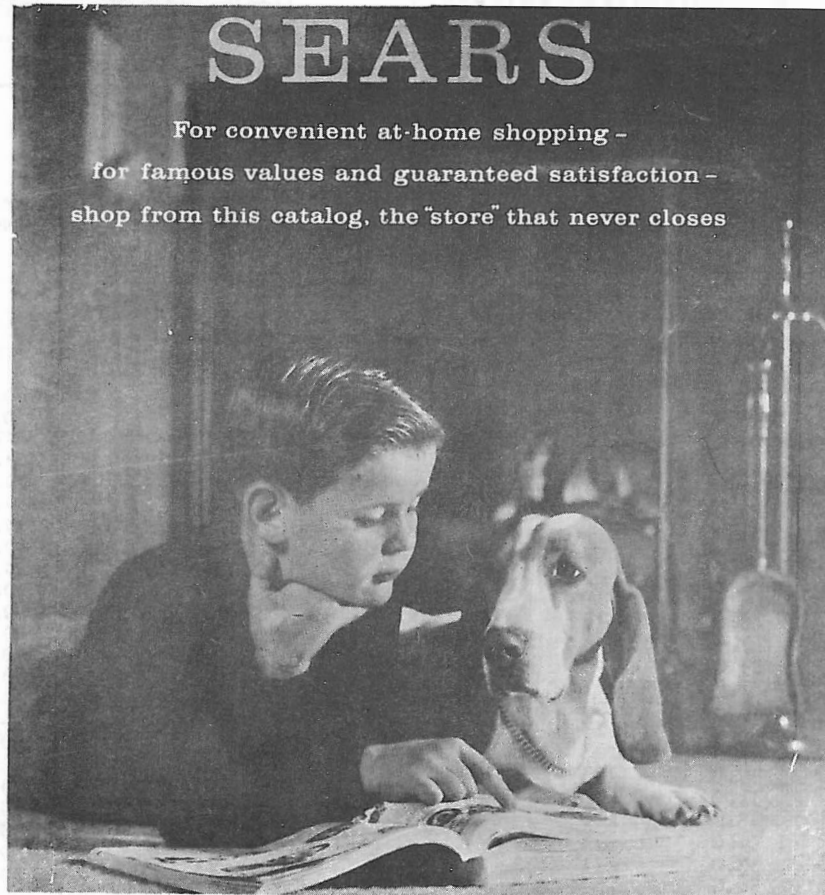
FALL & WINTER

HI2-2521

1959

SEARS

For convenient at-home shopping -  
for famous values and guaranteed satisfaction -  
shop from this catalog, the "store" that never closes



El Cajon **SEARS** 130 So Magnolia  
Hickory 2-2521

Open Mon. and Fri. 'til 9 p.m.

PARKING IN REAR—ENTER AT DOUGLAS STREET